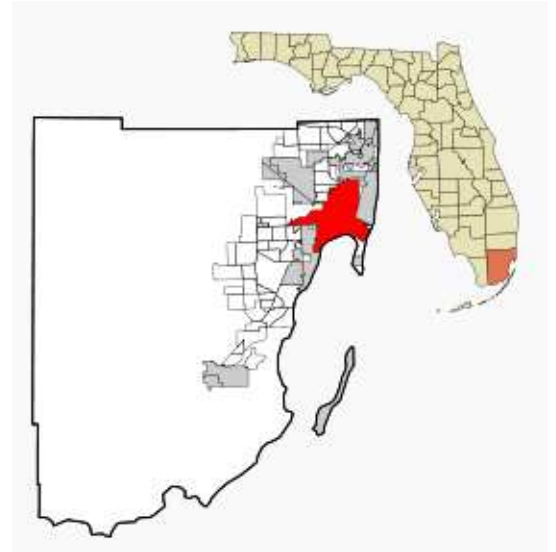


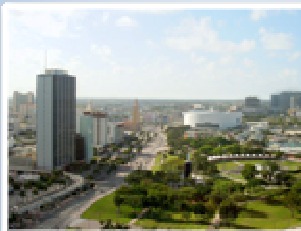
MIAMI

Miami is a coastal city in southeastern **Florida**, in the **United States**. Miami is the county seat of **Miami-Dade County**, the most populous county in Florida. With an estimated population of 409,719 in 2007, Miami is the largest city within the Miami metropolitan area, which is the seventh-largest metro area in the United States with over 5.4 million residents. The Miami Urbanized Area was the fifth most populous urbanized area in the U.S. in the 2000 census with a population of 4,919,036. The United Nations estimated that in 2007, Miami had become the fourth largest urbanized area in the United States, behind New York City, Los Angeles, and Chicago.



The Four Seasons Hotel Miami, also known as the Four Seasons Tower, is a skyscraper in Miami, Florida. The tower contains a Four Seasons Hotel, office space and several residential condominium units on the upper floors. Standing at a height of 789 feet (240 m), with 70 floors, it is the tallest building in the state of Florida and the tallest residential building in the United States south of Philadelphia.

The Adrienne Arsht Center for the Performing Arts is the second biggest shows center after Lincoln Center in New York.

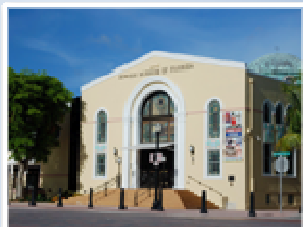


Bayfront Park is a major public, urban park (32 acres or .13 km²) in Downtown Miami, Florida. The park began construction in 1924 under the design plans of Warren Henry Manning and officially opened in mid-1925. Starting in 1980, it underwent a major redesign by Japanese-American modernist artist and landscape architect, Isamu Noguchi. Today, Bayfront Park is maintained by Miami-Dade County Parks and Recreation Department, a public organization that manages all the parks

within Miami. Bayfront Park is bordered on the north by Bayside Marketplace and the American Airlines Arena, on the south by Chopin Plaza, on the west by Biscayne Boulevard and on the east by Biscayne Bay. Bayfront Park is host to many large events such as the New Year's ball drop, Christmas celebrations, concerts, Miami SkyLift balloon, the Bayfront Park Amphitheater, the Tina Hills Pavilion, as well as boat tours around Biscayne Bay.



The Patricia and Phillip Frost Art Museum or simply known as the Frost Art Museum is a Florida International University museum located on-campus in University Park in metropolitan Miami, Florida.

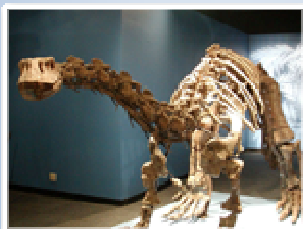


The Jewish Museum of Florida is located in two restored historic buildings that were formerly synagogues, at 301 & 311 Washington Ave., in Miami Beach, Florida. The main Museum building, at 301 Washington Ave., was built in 1936, is on the National Register of Historic Places, has Art Deco features, a copper dome, a marble bimah and 80 stained glass windows. The adjacent building located at 311 Washington, which served as Miami Beach's first synagogue, was purchased by the Museum in 2005 and restored in 2007 as a Museum expansion.



The Miami Art Museum (MAM) is an art museum located in Downtown Miami, Florida, in the United States. It was founded in 1996 as the successor to the Center for the Fine Arts. The MAM dedicates itself to contemporary art and is located at 101 West Flagler Street in Downtown Miami in the same Miami Cultural Plaza as the Historical Museum of Southern Florida and the Miami-Dade Public Library. Current plans are to transplant the MAM from its current location in the Central Business District to Park West at

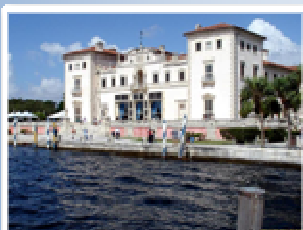
Bicentennial Park along with the Miami Science Museum with plans for completion around 2012.



The Miami Science Museum is an attraction located in the city of Miami, Florida USA. The museum itself also contains a planetarium, Weintraub Observatory and a wildlife center. The museum is currently working to transplant the museum from its current location to Park West at Bicentennial Park in Downtown Miami along with the Miami Art Museum.



The Museum of Contemporary Art (MoCA) is a museum located in the heart of downtown North Miami, Florida. The 23,000-square-foot (2,100 m²) structure was designed by the internationally acclaimed architecture firm Gwathmey Siegel & Associates Architects, New York, which worked in conjunction with the Miami firm of Gelabert-Navia to create the building.



Vizcaya is an estate or villa in a North Italian sixteenth-century style on Biscayne Bay in Miami, Florida, designed for James Deering as a winter residence. The estate originally consisted of 180 acres, including the main house, formal gardens, extensive lagoon gardens, and a village that serviced the property. The main house was built between 1914 and 1916, while the construction of the complicated gardens and the village continued into the early 1920s. During these latter years labor and materials were difficult

to acquire as a result of World War I. Vizcaya is noteworthy for adapting European cultural traditions to Miami's subtropical landscape. The house, for example, combines European marble and Floridian limestone while the Italianate gardens rely on plants capable of thriving in Miami's climate.



Miami MetroZoo is the largest and oldest zoological garden in Florida. It is located in southern unincorporated Miami-Dade County southwest of the city of Miami and west of the village of Palmetto Bay. It houses over 1,200 wild animals and is the only subtropical zoo in the continental United States. The zoo is on 740 acres (3.0 km²), 300 of which are developed. It is 3 mi (5 km) around if walked on the path, and has over 80 exhibits.

INFORMATION

Tourism Office of Miami

701 Brickell Avenue, Suite 2700
33131 USA Miami, FL